

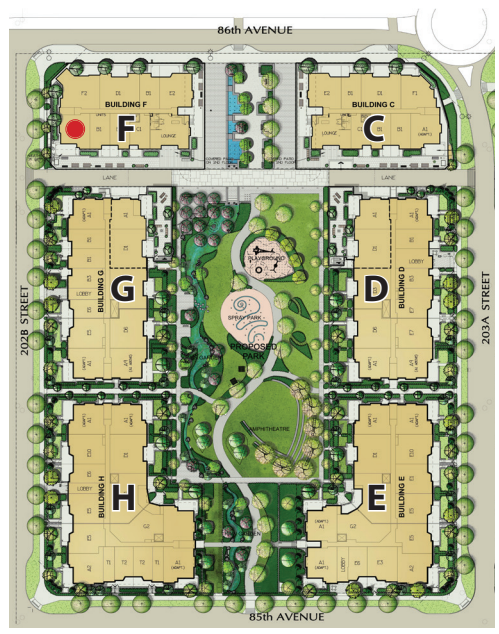
Style
A3

CORNER SUITE

3 Bedroom

Livable: 1276 sq.ft.

Suite 1041 sq.ft. + Solarium/deck 235 sq.ft.



F603 \$639,900

ACCESSIBILITY:
These suites are built in such a way to be able to be converted to accessible homes if desired in the future.



As part of our on-going product development program, the Developer reserves the right to make modifications and/or changes to the specifications. Square footages and room sizes are based on Architectural drawings and actual measurements may vary. Diagrams are close representations, as-built sizes and A/C locations vary slightly. E. & O.E.