

Style
A1,A6

CORNER SUITE

3 Bedroom

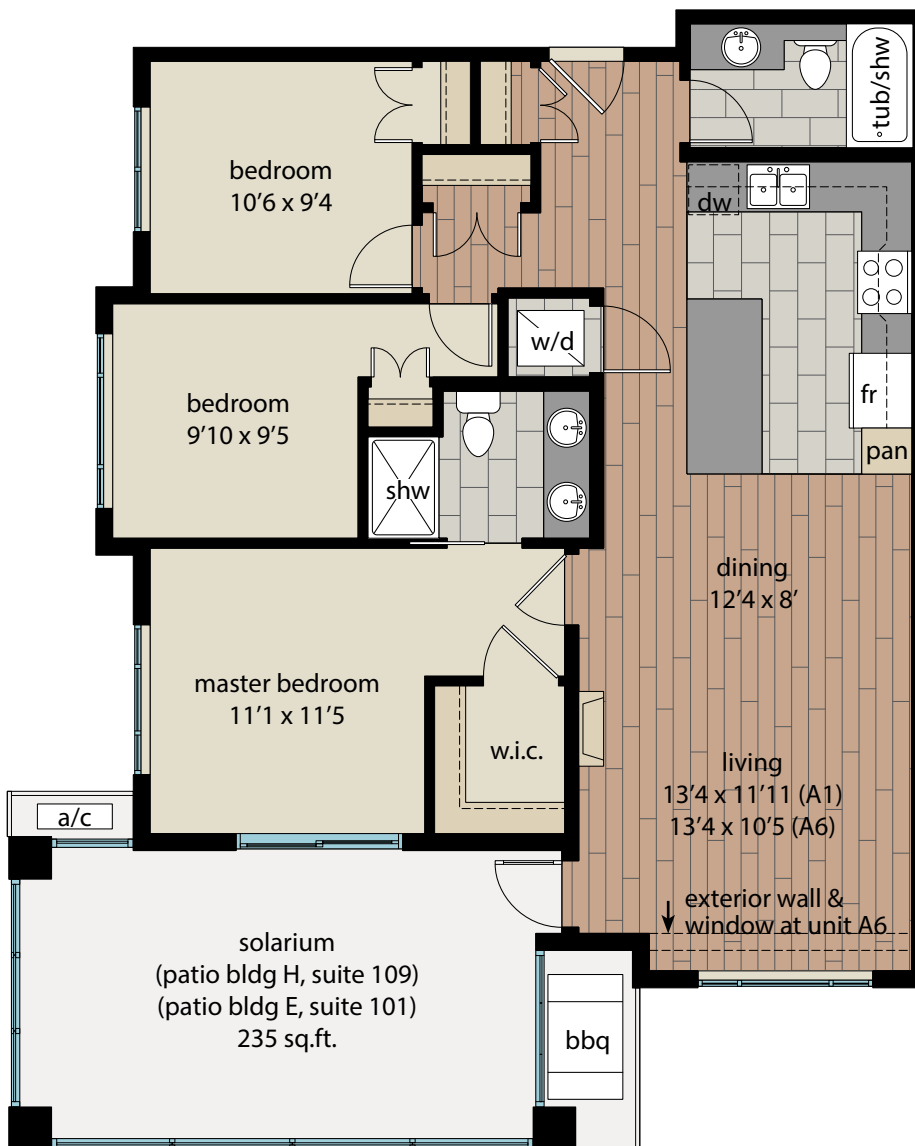
ACCESSIBLE



Livable: 1337 ~ 1355 sq.ft.

Suite (A1) 1120 sq.ft. + Solarium/deck 235 sq.ft.

Suite (A6) 1102 sq.ft. + Solarium/deck 235 sq.ft.



Solarium
Balcony



Air
Conditioning



Every suite has
2 Car Parking



Huge Storage
Garage



Natural Gas
Range/BBQ

ACCESSIBILITY:

These suites are built in such a way to be able to be converted to accessible homes if desired in the future.